

Webinar Will Begin Momentarily

Become an Orgain Ambassador Today!

Request an Orgain Ambassador account to access our on-line sampling portal so you can share Orgain products and discount offers with your patients or clients.



healthcare.orgain.com/ambassador

Orgain[®]

Professional Education Series

Support. Inform. Educate. Empower.

Race, Ethnicity, and Social Determinants of Health in Diabetes Care & Management

TODAY'S AGENDA:

- Introduction & Housekeeping
- Speaker Introduction
- Presentation
- Q&A
- Closing



WEBINAR HOST:

Keith Hine, MS, RD

VP of Healthcare, Sports & Professional Education
Orgain, LLC



WEBINAR PRESENTER:

Kim Rose, RDN, CDCES, CNSC, LD

Registered Dietitian and Certified Diabetes Educator

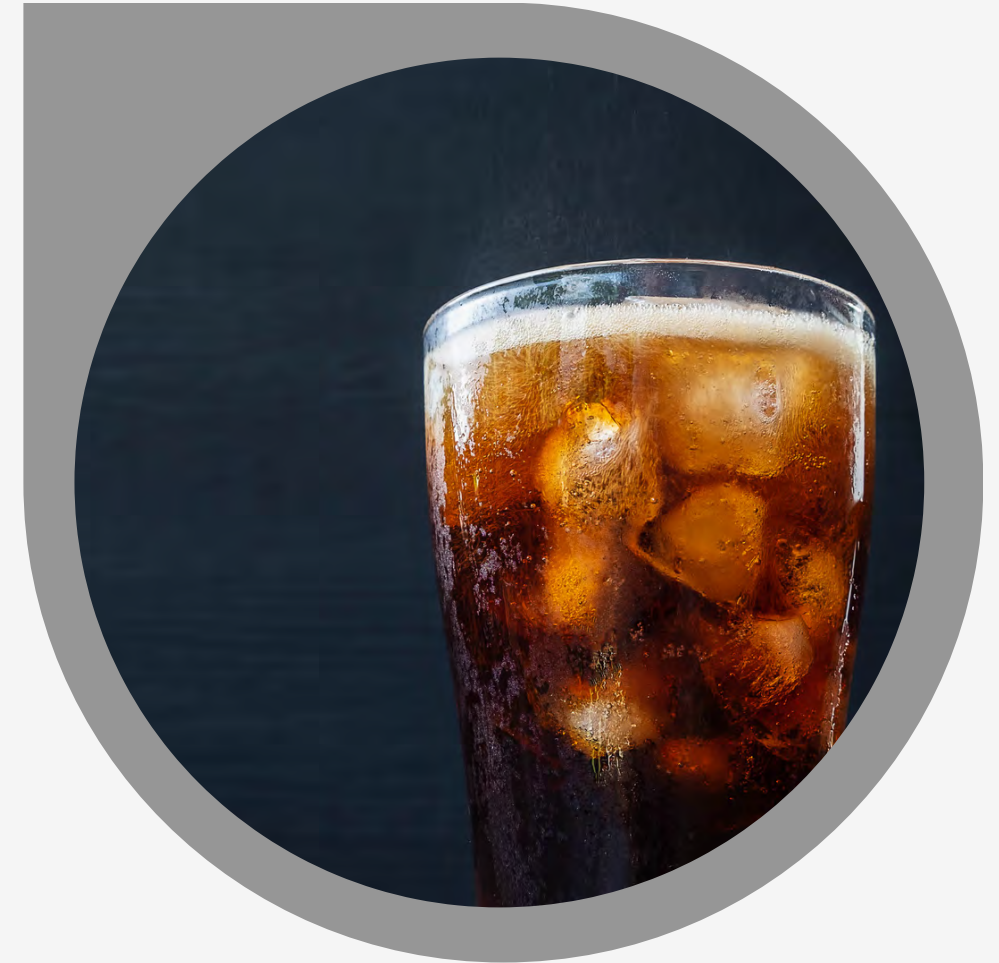
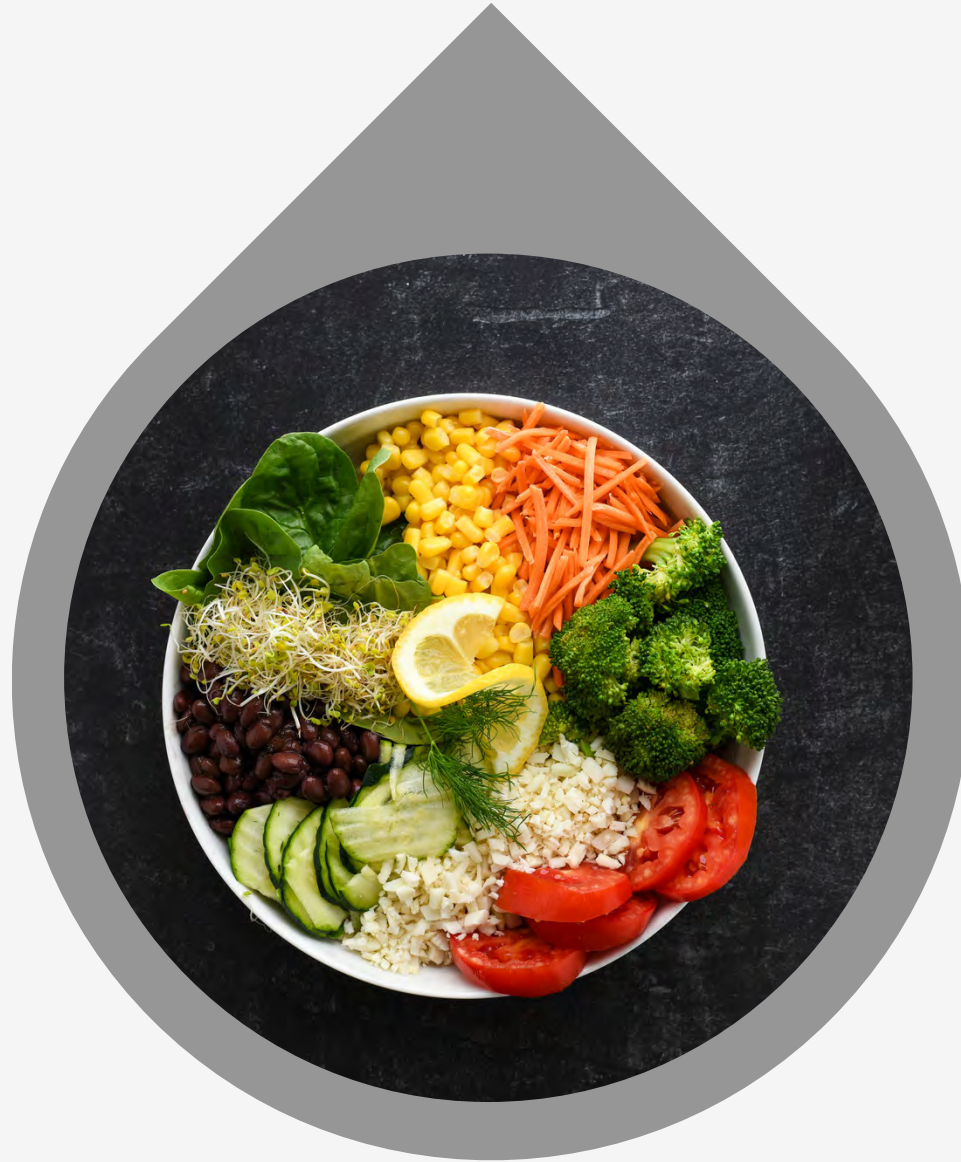
Objectives

- 01** Review the history of race-based medicine in diabetes care and management and its lingering impact on the healthcare system.
- 02** Explore how food insecurity accentuates health disparities.
- 03** Identify strategies to improve glycemic management and health care outcomes.

Interchangeable Terms

- Hispanic/ Latino
- African American/ Black
- Caucasian/ White
- Indigenous American/ Native American

'DIABETES'



What comes to your mind?

BREAKING NEWS

December 30, 2022, New York Post

Type 2 diabetes on track to surge 700% in young Americans: CDC issues 'wake-up call'

Bailey-Millado, R. (2022, December 30). Type 2 diabetes on track to surge 700% in Young Americans: CDC issues "wake-up call."
New York Post. <https://nypost.com/2022/12/30/diabetes-on-track-to-increase-700-in-young-americans/>

**Who is considered to be the most
at risk and WHY?**

Europeans

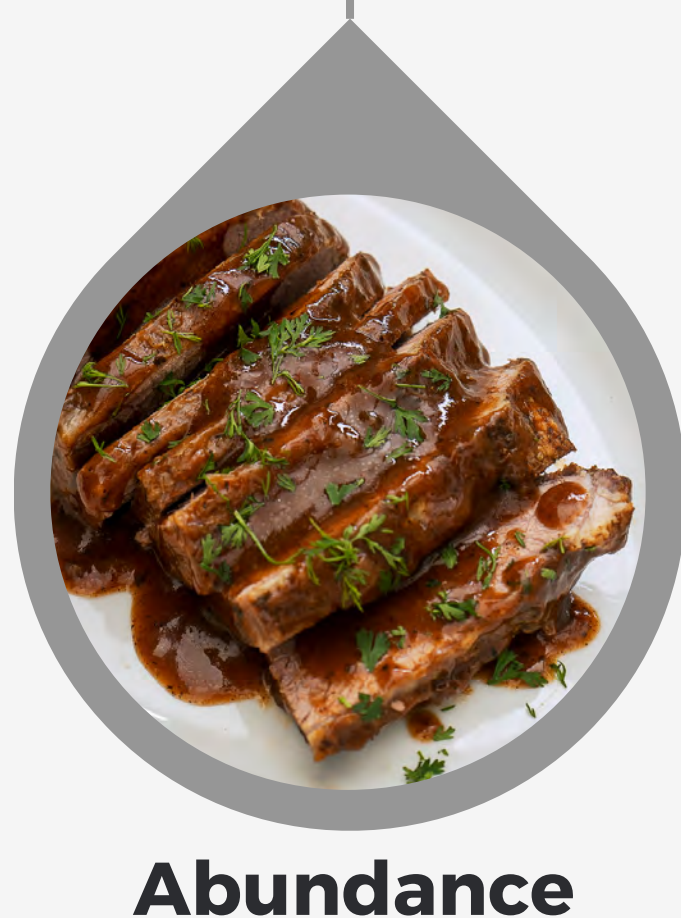
Europe



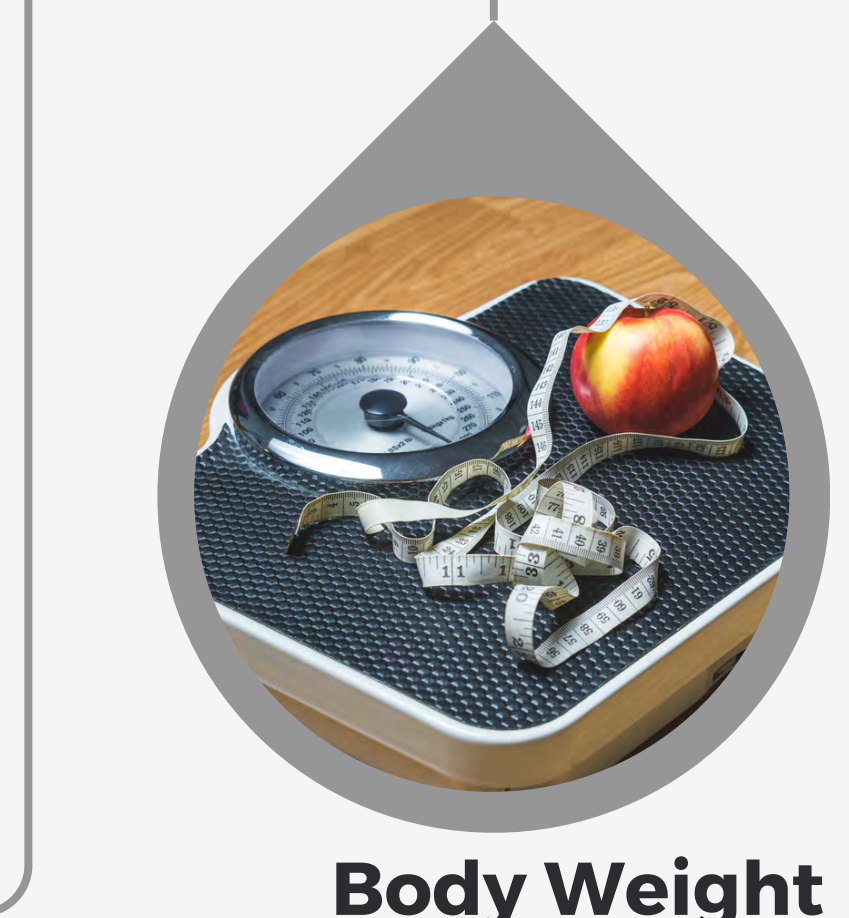
Proliferation



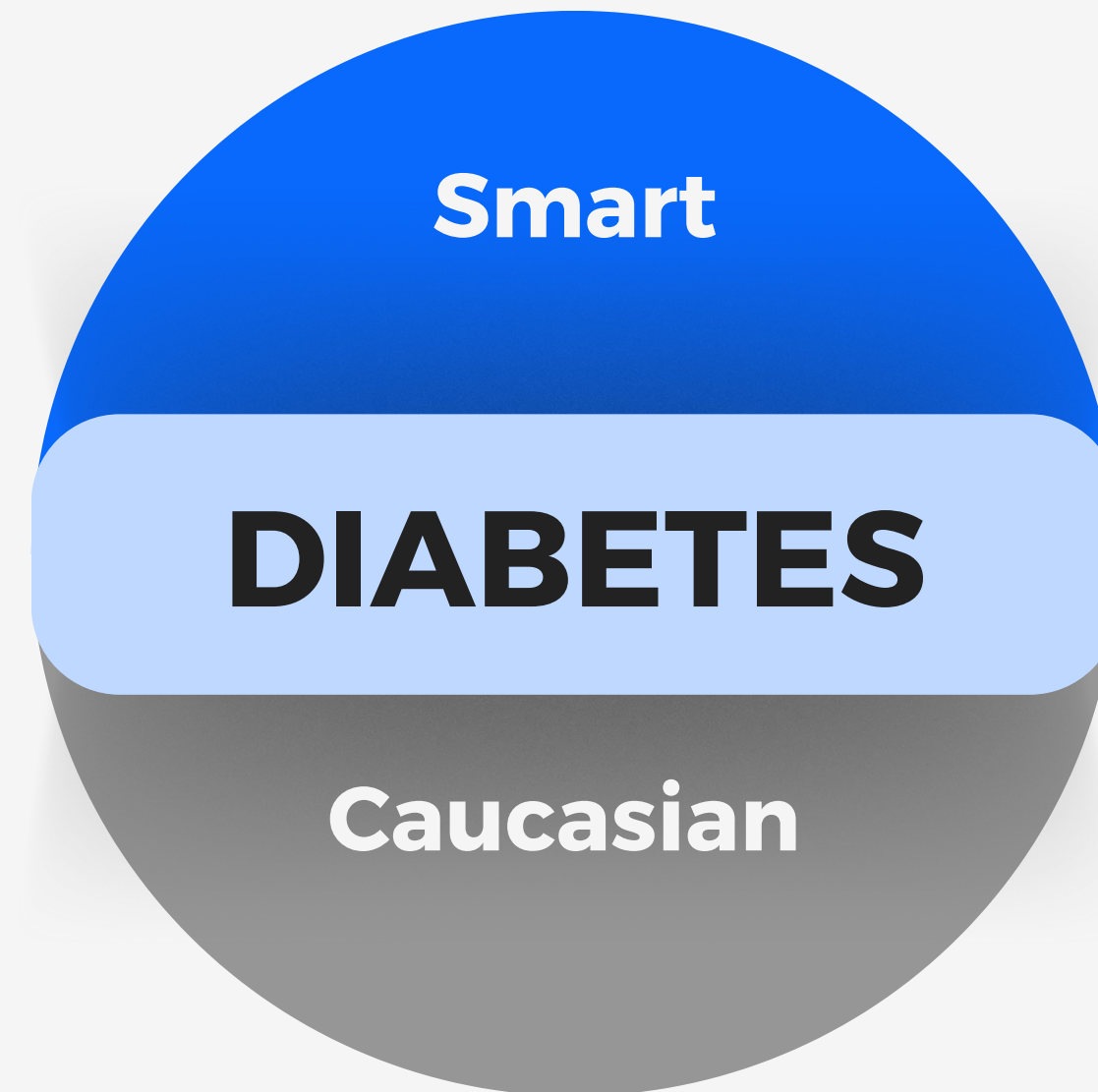
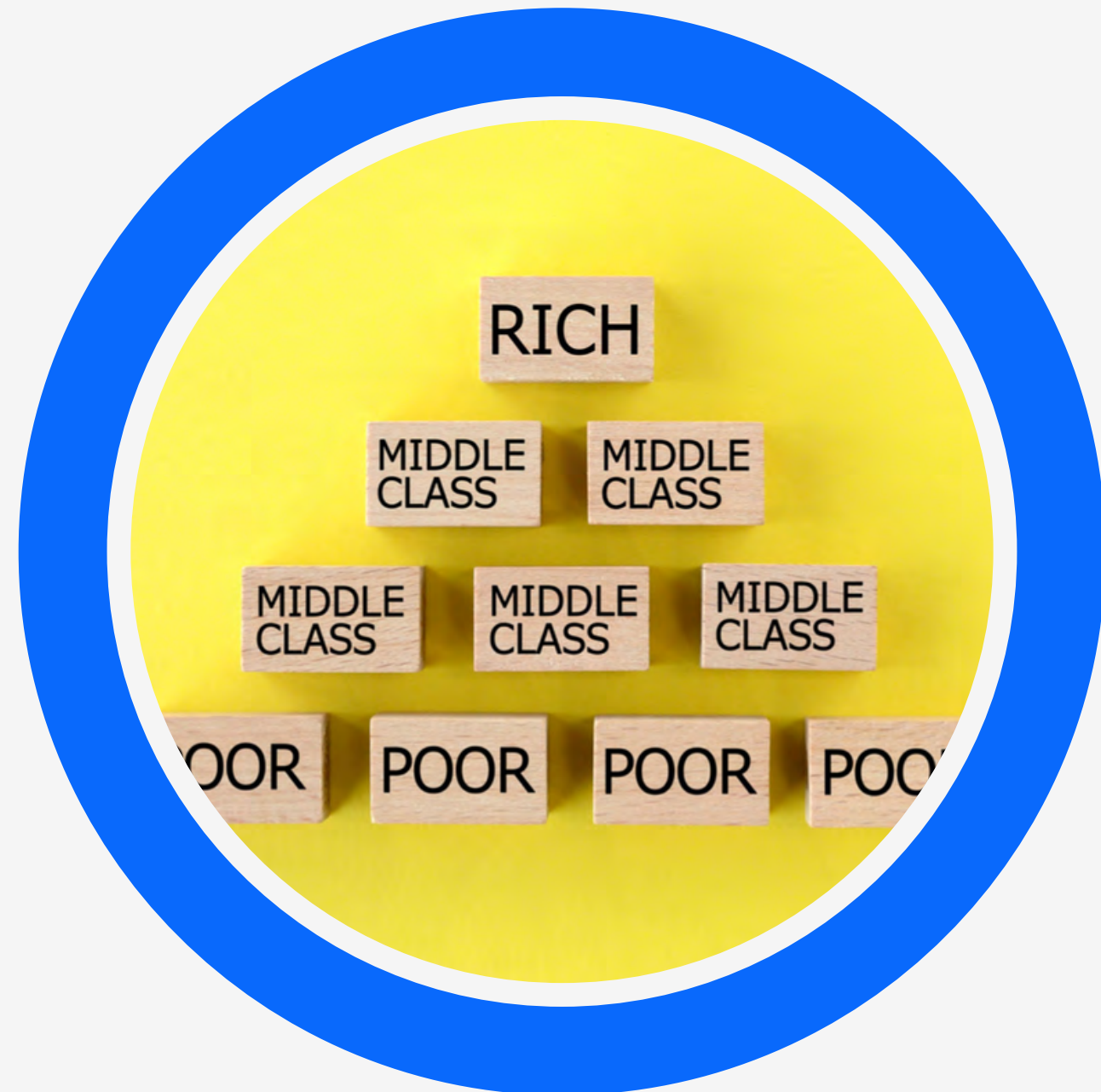
Abundance



Body Weight



Privilege & Status



African Americans

Literacy

Emancipation

Tuberculosis

Syphilis

Mortality

Small Pox

Cholera

Yellow Fever

Malnutrition

Maternal Death

African Americans

Tuberculosis



Who is black?



**Infrequent
doctors visits**



State Laws



Biology & Racial Immunity

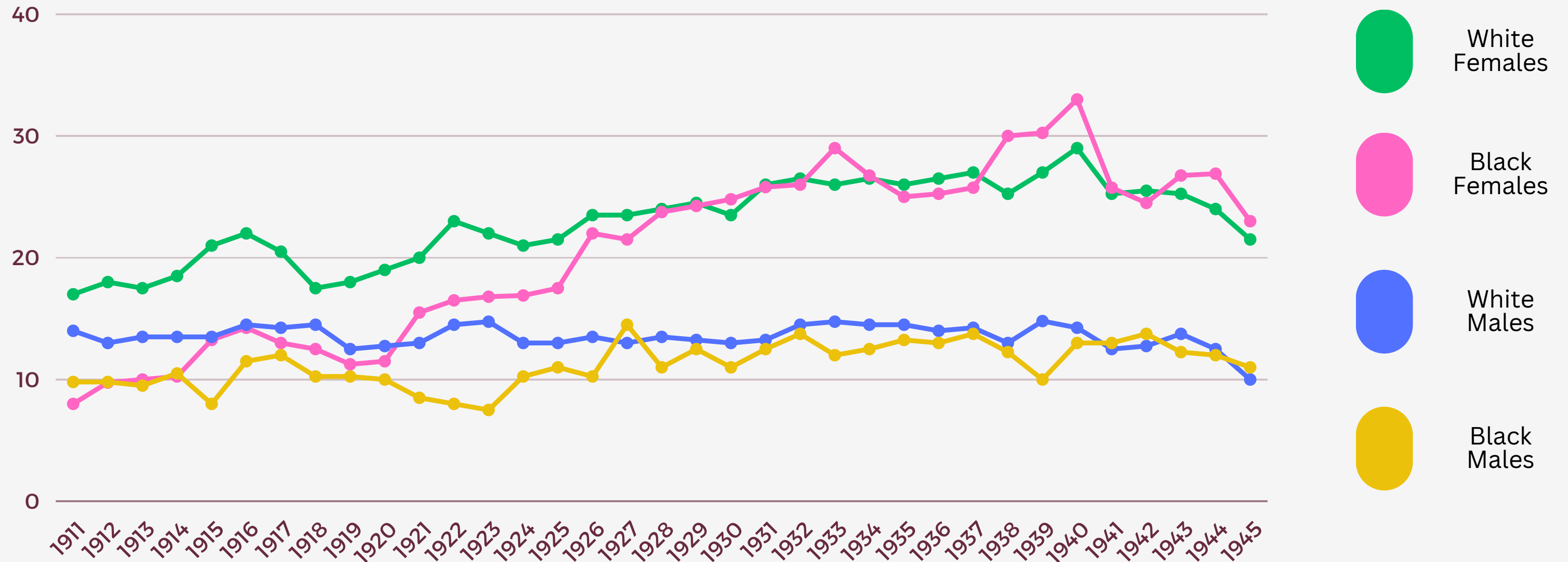


Diabetes Mellitus

Standardized Annual Death Rates per 100,000

By Color and Sex. Ages 1 to 74 Years

Metropolitan Life Insurance Company, Industrial Dept., 1911 to 1945



Health Progress, 1936 to 1945; A Supplement To Twenty-Five Years of Health Progress, by Louis I. Dublin, with the collaboration of the staff of the statistical ... HathiTrust. (n.d.). <https://babel.hathitrust.org/cgi/pt?id=mdp.39015006470630&view=1up&seq=79>

Good Food vs. Bad Food





CHASE

CHICAGO

CHICAGO

PAW PATROL LIVE!
JANUARY 12-13
6 SHOWS

PAW PATROL LIVE!
RACE TO THE RESCUE

MATTRESS FIRM

MATTRESS FIRM

MATTRESS FIRM

MATTRESS FIRM

Walgreens

Walgreens

Walgreens

Walgreens

JOFFEY BALLET

JOFFEY * BALLET
CHICAGO
ANNA
KARENINA

WORLD
PREMIERE

AN EPIC
LOVE ST...



Indigenous (Native) Americans



"Diabetes in the Native American population was virtually unknown in 1940."

Native Peoples

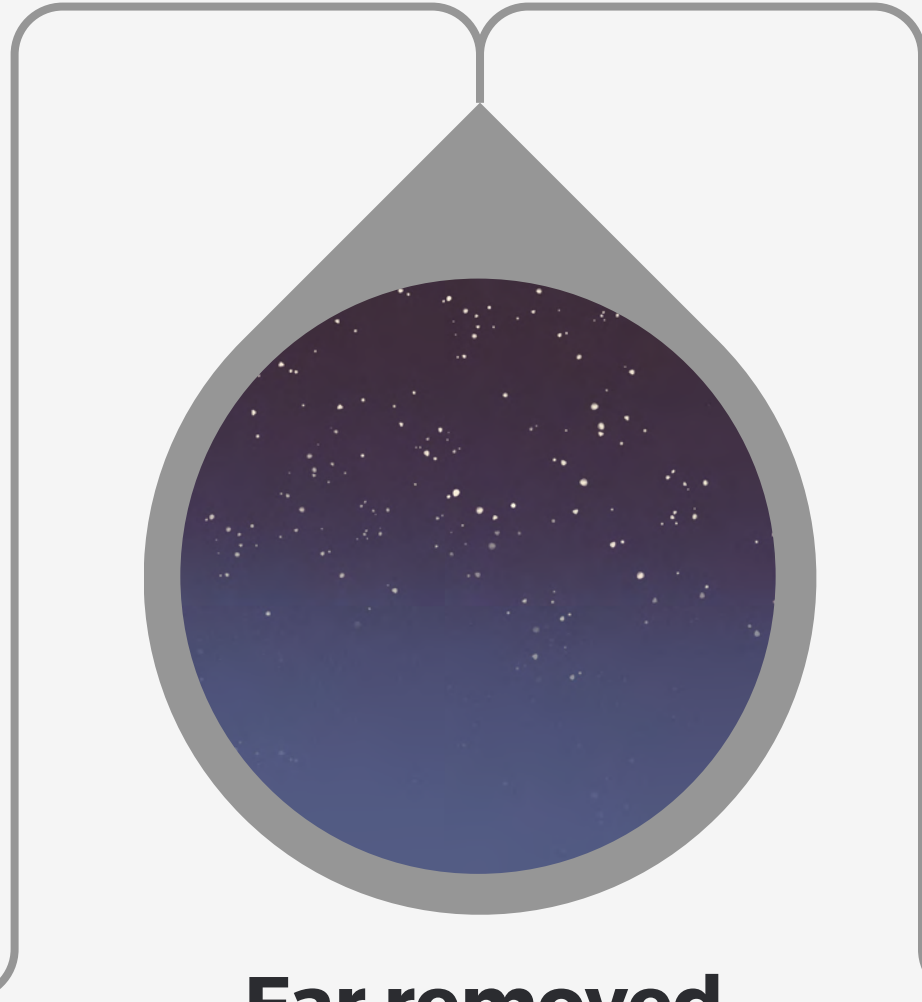
Tuberculosis



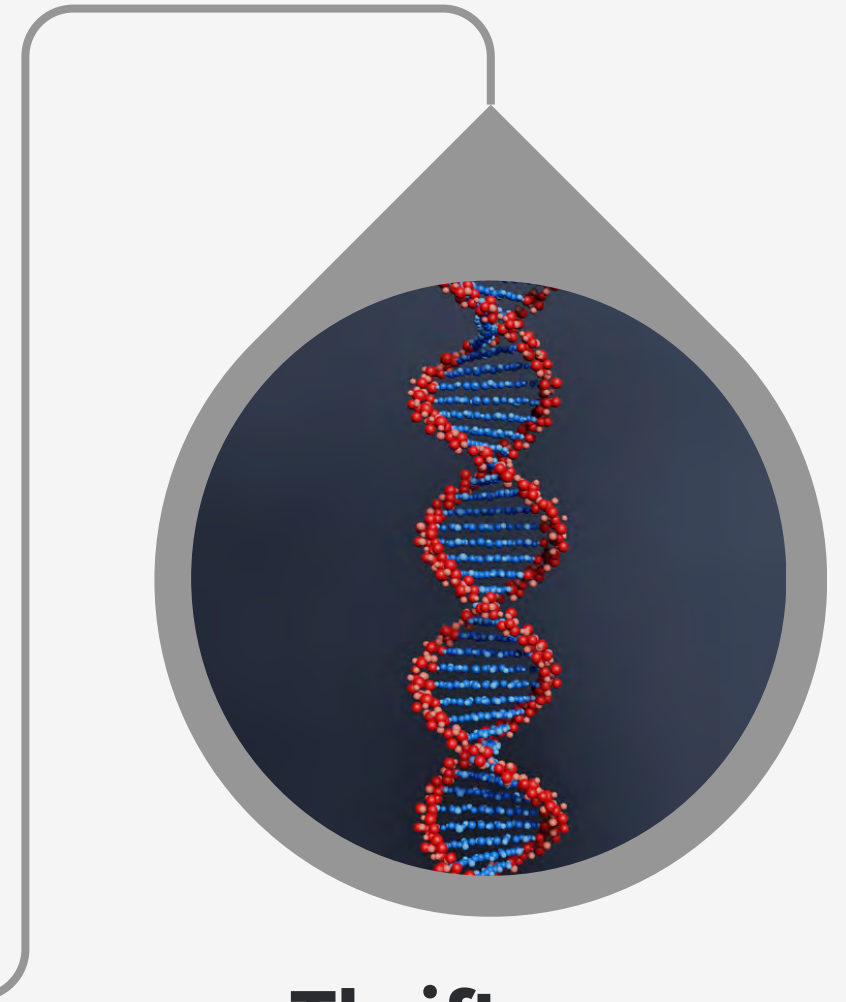
Generalization



Far removed

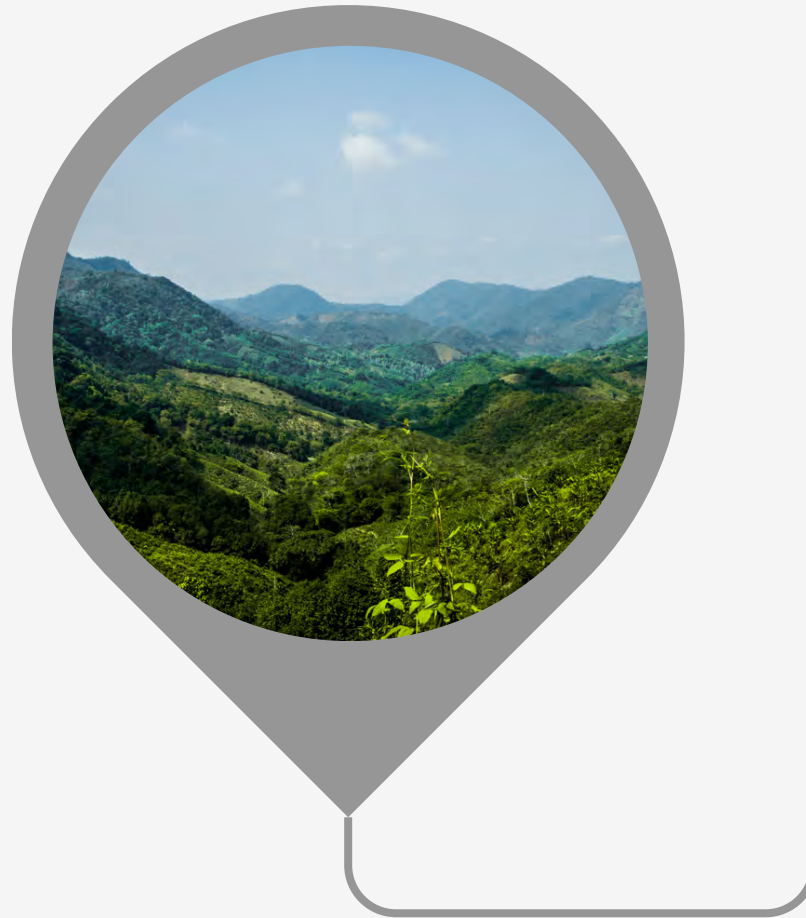


Thrifty gene hypothesis



Appalachia

**From
Mississippi
to New York**



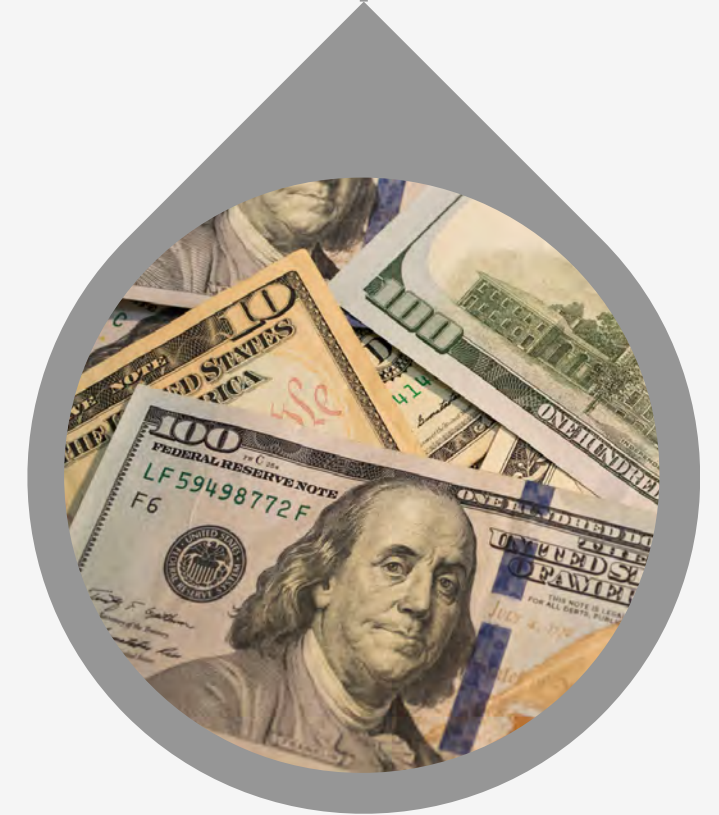
Health Insurance



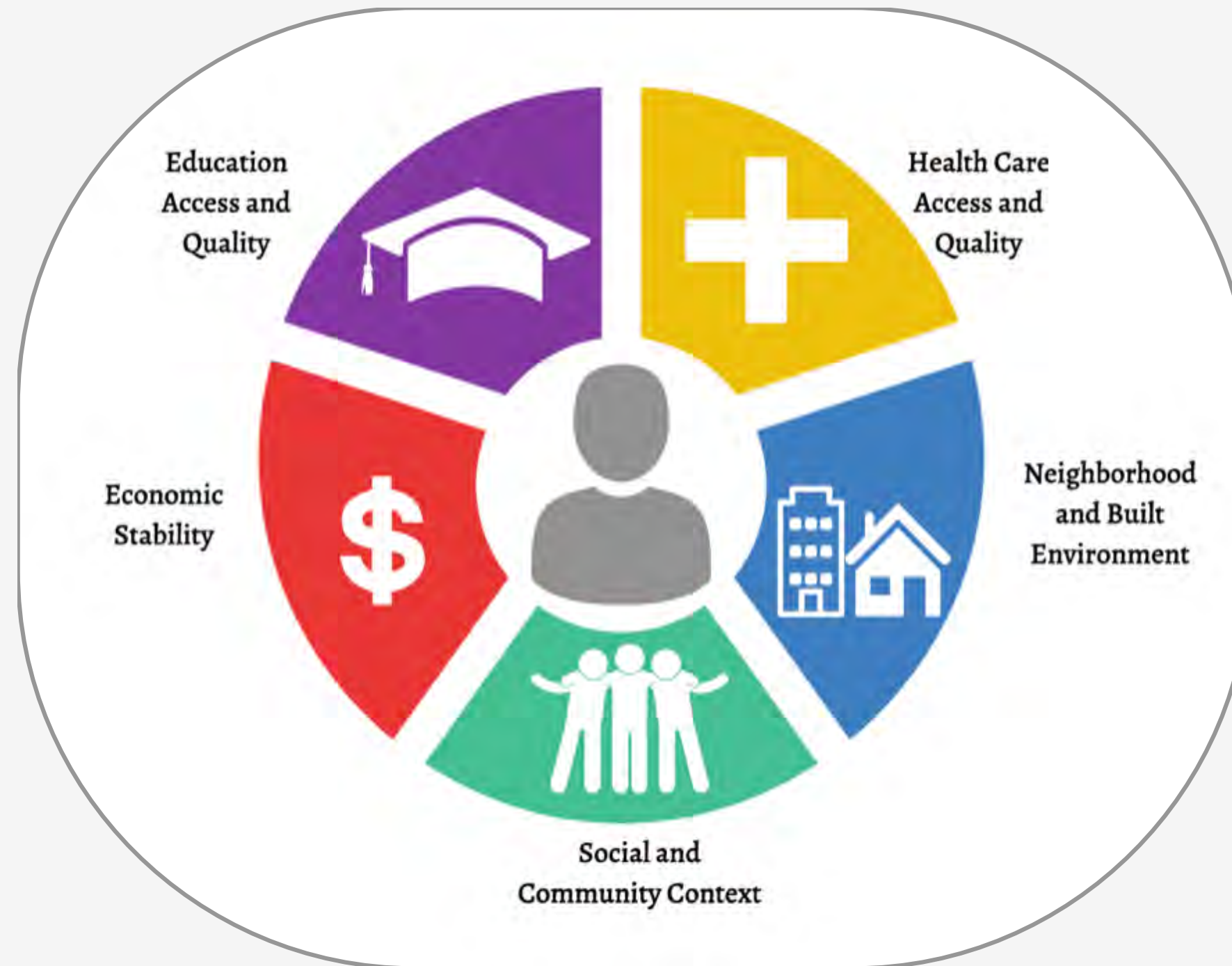
**Burden of
Diabetes**



**Economically
depressed**



Social Determinants of Health



Economic Stability



- Poverty
- Employment
- Food security

Food Insecurity



- In 2021, thirty-two percent of households experienced food insecurity.

Neighborhood & Built Environment



- Access to transportation
- Availability of healthy foods

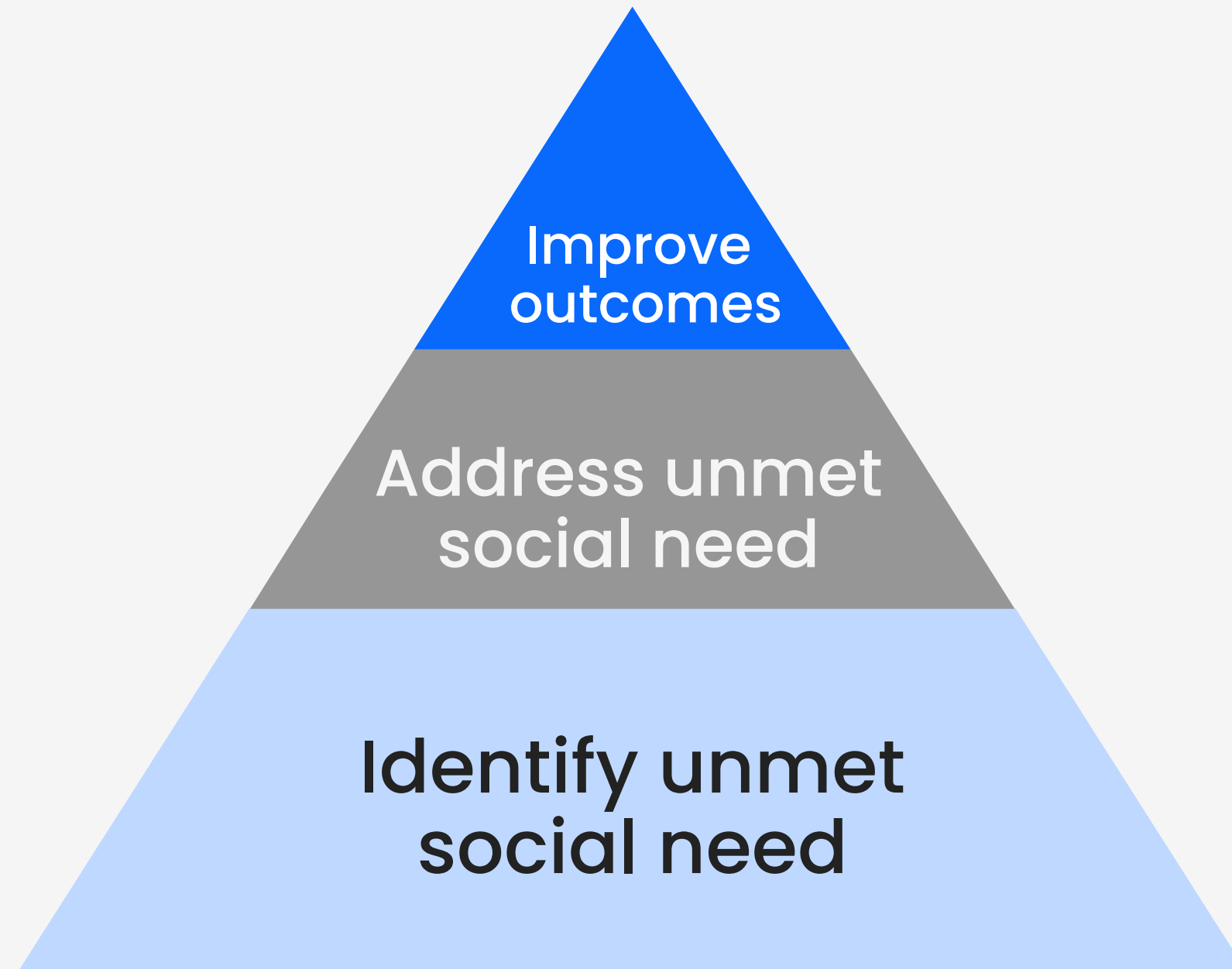
**Closing the Gap: Improving
glycemic management and
health care outcomes**

2023 Standards of Medical Care in Diabetes

1. Improving Care and Promoting Health in Populations

Diabetes-related health inequities are well documented and have been associated with greater risk for diabetes, higher population prevalence, and poorer diabetes outcomes.

Strategy: The O.A.S.I.S. Framework



Gurewich, D., Garg, A., & Kressin, N. R. (2020). Addressing social determinants of health within healthcare delivery systems: A Framework to ground and inform health outcomes. *Journal of General Internal Medicine*, 35(5), 1571-1575.
<https://doi.org/10.1007/s11606-020-05720-6>

Strategy: The O.A.S.I.S. Framework



Health Equity & Advocacy



Resources

- **Food banks:**
 - <https://www.feedingamerica.org/find-food-bank>
- **Peer Support:**
 - <https://www.diabeteseducator.org/living-with-diabetes/peer-support>
- **Diabetes Kickstart:**
 - <https://www.cdc.gov/diabetestv/diabetes-kickstart.html>
- **Drug Discount Programs:**
 - <https://www.rxassist.org>
 - <https://www.needymeds.org>

References

1. Bailey-Millado, R. (2022, December 30). Type 2 diabetes on track to surge 700% in young americans: cdc issues “wake-up call.” New York Post. Retrieved December 31, 2022, from <https://nypost.com/2022/12/30/diabetes-on-track-to-increase-700-in-young-americans/>.
2. Tuchman, A. M. (2020). Diabetes: A history of race and disease. Yale University Press.
3. Health Progress, 1936 to 1945; A Supplement To Twenty-Five Years of Health Progress, by Louis I. Dublin, with the collaboration of the staff of the statistical ... HathiTrust. (n.d.). <https://babel.hathitrust.org/cgi/pt?id=mdp.39015006470630&view=1up&seq=79>
4. Edwards, K. (Kay), & Patchell, B. (2009). State of the Science: A Cultural View of Native Americans and Diabetes Prevention. *J Cult Divers.* , 16(1), 32–35.
5. Clark ML and Utz SW. Social Determinants to Type 2 Diabetes and Health in the United States. *World J Diabetes* 2014;5(3):296–304
6. Gucciardi E, Vahabi M, Norris N, Del Monte JP, Farnum C. The intersection between food insecurity and diabetes: a review. *Curr Nutr Rep.* 2014;3(4):324–332.
7. Holben DH, Pheley AM. Diabetes risk and obesity in food-insecure households in rural Appalachian Ohio. *Prev Chronic Dis* [serial online]. July 2006 [October 30, 2023] Available from: URL: http://www.cdc.gov/pcd/issues/2006/jul/05_0127.htm
8. Carpenter, R., & Smith, M. J. (2018). Living with diabetes in Appalachia. *Holistic Nursing Practice*, 32(4), 196–201. <https://doi.org/10.1097/hnp.0000000000000273>
9. Poverty rates in Appalachia, 2013–2017. Appalachian Regional Commission. (2020, August 14). <https://www.arc.gov/map/poverty-rates-in-appalachia-2013-2017/#:~:text=Appalachian%20poverty%20rates%20range%20from%206.5%25%20to%2041.0%25,average%20is%2016.3%25.%20The%20U.S.%20average%20is%2014.6%25.>
10. Centers for Disease Control and Prevention. (2023, March 27). Economic stability. Centers for Disease Control and Prevention. <https://www.cdc.gov/prepyourhealth/discussionguides/economicstability.htm>
11. Food Security and nutrition assistance. USDA ERS - Food Security and Nutrition Assistance. (n.d.). <https://www.ers.usda.gov/data-products/ag-and-food-statistics-charting-the-essentials/food-security-and-nutrition-assistance/>
12. Centers for Disease Control and Prevention. (2022, August 1). Food and nutrition insecurity and diabetes. Food and Nutrition Insecurity and Diabetes: Understanding the Connection. <https://www.cdc.gov/diabetes/library/features/diabetes-and-food-insecurity.htm>
13. American Diabetes Association. (2022, December 12). Standards of care in Diabetes-2023 abridged for Primary Care Providers. <https://diabetesjournals.org/clinical/article/41/1/4/148029/Standards-of-Care-in-Diabetes-2023-Abridged-for>
14. Gurewich, D., Garg, A., & Kressin, N. R. (2020). Addressing social determinants of health within healthcare delivery systems: A Framework to ground and inform health outcomes. *Journal of General Internal Medicine*, 35(5), 1571–1575. <https://doi.org/10.1007/s11606-020-05720-6>

Thank you for joining us today.

Become an Orgain Ambassador Today!

Request an Orgain Ambassador account to access our on-line sampling portal so you can share Orgain products and discount offers with your patients or clients.



healthcare.orgain.com/ambassador

Orgain®

Professional Education Series

Support. Inform. Educate. Empower.



WEBINAR HOST:

Keith Hine, MS, RD

VP of Healthcare, Sports & Professional Education
Orgain, LLC

keith.hine@orgain.com



WEBINAR PRESENTER:

Kim Rose, RDN, CDCES, CNSC, LD

Registered Dietitian and Certified Diabetes Educator

kimrosedietitian@gmail.com



GENERAL INQUIRIES:

medinfo@orgain.com